

info

## Installation Instructions for Glue-Assist Nail-down method

Boen Hardwood Flooring Inc has partnered with Powernail and Bona USA in presenting these comprehensive installation guidelines. The instructions are valid for all Tongue and Groove and Clic profiled ½” and 9/16” Boen Hardwood Floors marketed in the USA and Canada.

### 1<sup>st</sup> Step:

Apply one bead of approx. ¼” of silane-modified hardwood adhesive (such as **BONA R850T**) to the plywood subfloor in the center of the flooring plank. Alternatively, for greater stability, create a 6” wide serpentine line of adhesive.



### 2<sup>nd</sup> Step:

After laying the first board into the bead of glue, position the nailing machine so that the nail will enter the floor board at an angle between the upper lip of the tongue and the face of the floor (see photo right). We recommend an **18-gauge cleat (1-1/4”-1-1/2” length)**, nailing **every 6 inches**. The first



and last cleat are placed two inches from the end of each plank.

Use approximately **80 PSI** (**Caution:** be careful adjusting pressure as calibration between air compressors may vary.)

Recommended nailing machines: **Powernail 50F** trigger 18GA **Cleat Nailer** or **Powernail 50P Flex** 18GA **Cleat Nailer**. (Clic interlocking planks: use **Powernail 50F** only)



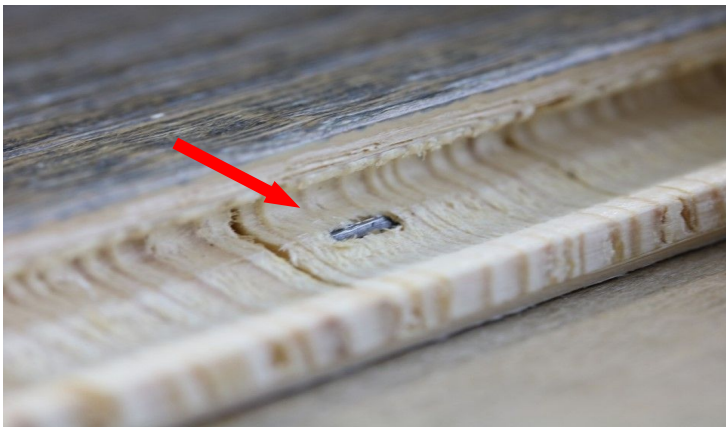
**3<sup>rd</sup> Step:** After spreading the second ¼” bead of glue, lay the next board into place and use a tapping block to connect tongue & groove.



Continue to repeat these steps row by row. To fasten the last row, use adhesive only.

### Specifics for the installation of clic interlocking hardwood planks

The ideal spot for the cleat in the clic groove is here:



### Why use glue?

Subfloor imperfections and unevenness, wide joist schedules greater than 16”, poor quality OSB subfloors and the trend toward extra wide floor planks may all contribute to hardwood floors squeaking in the event of nails loosening.

A small amount of adhesive will tightly fasten the floor and provide a secure installation. Approximate usage: 60 lin feet (20oz, ¼” bead, about 45 sft)

YOUR STYLE. YOUR FLOOR.



Boen Hardwood Flooring Inc.

1156, Pelican Bay Drive - Daytona Beach, FL 32119 -  
[sales@boen.com](mailto:sales@boen.com) – (386) 944-9507 or 1-877-638-3078  
[boen.com/en-us/](http://boen.com/en-us/)



**POWERNAIL®**

1300 Rose Road  
Lake Zurich, IL 60047

Phone: 800.323.1653

[www.powernail.com](http://www.powernail.com)



**Bona**

24 Inverness Place East, Ste 100

Englewood, CO 80112

Phone 877-289-2662